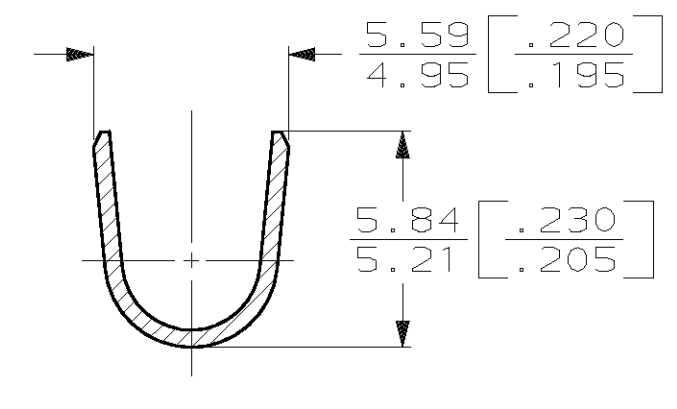
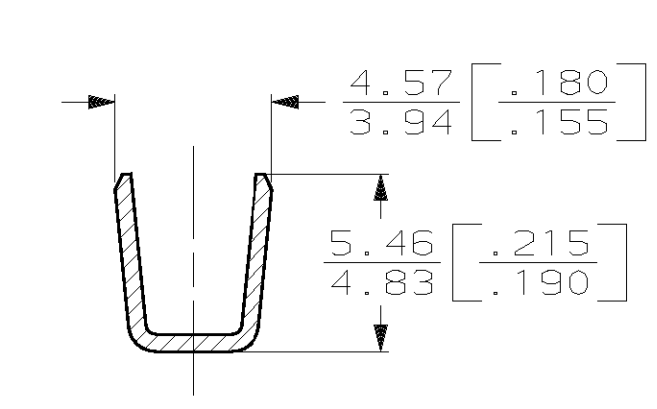
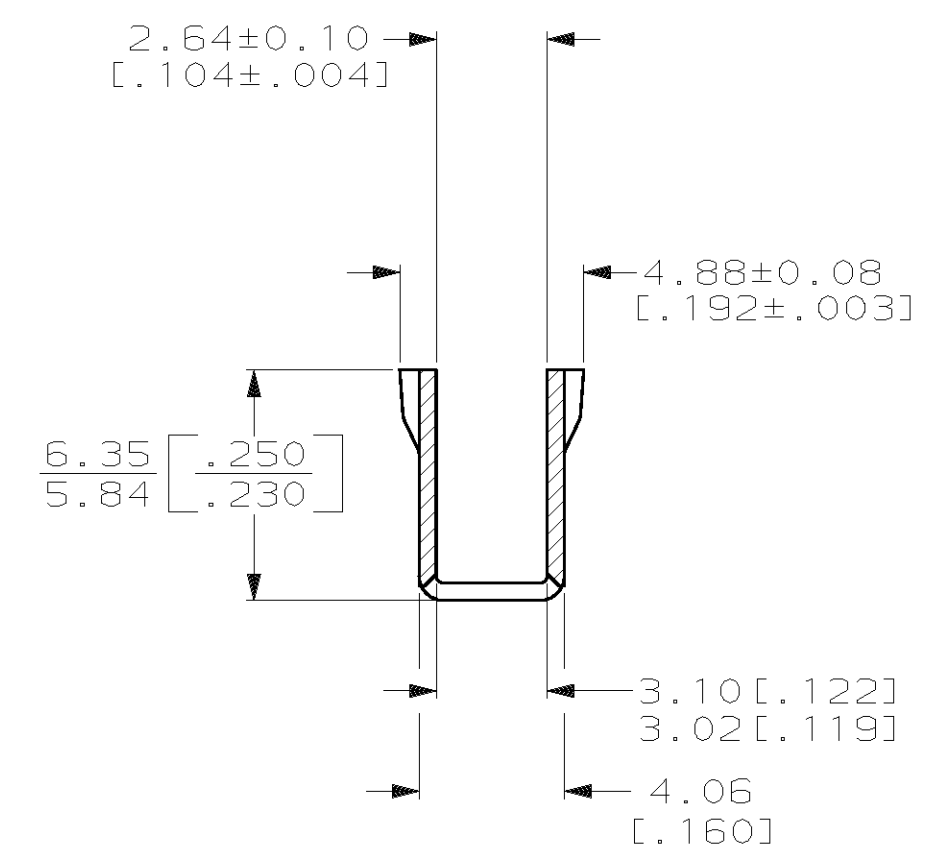
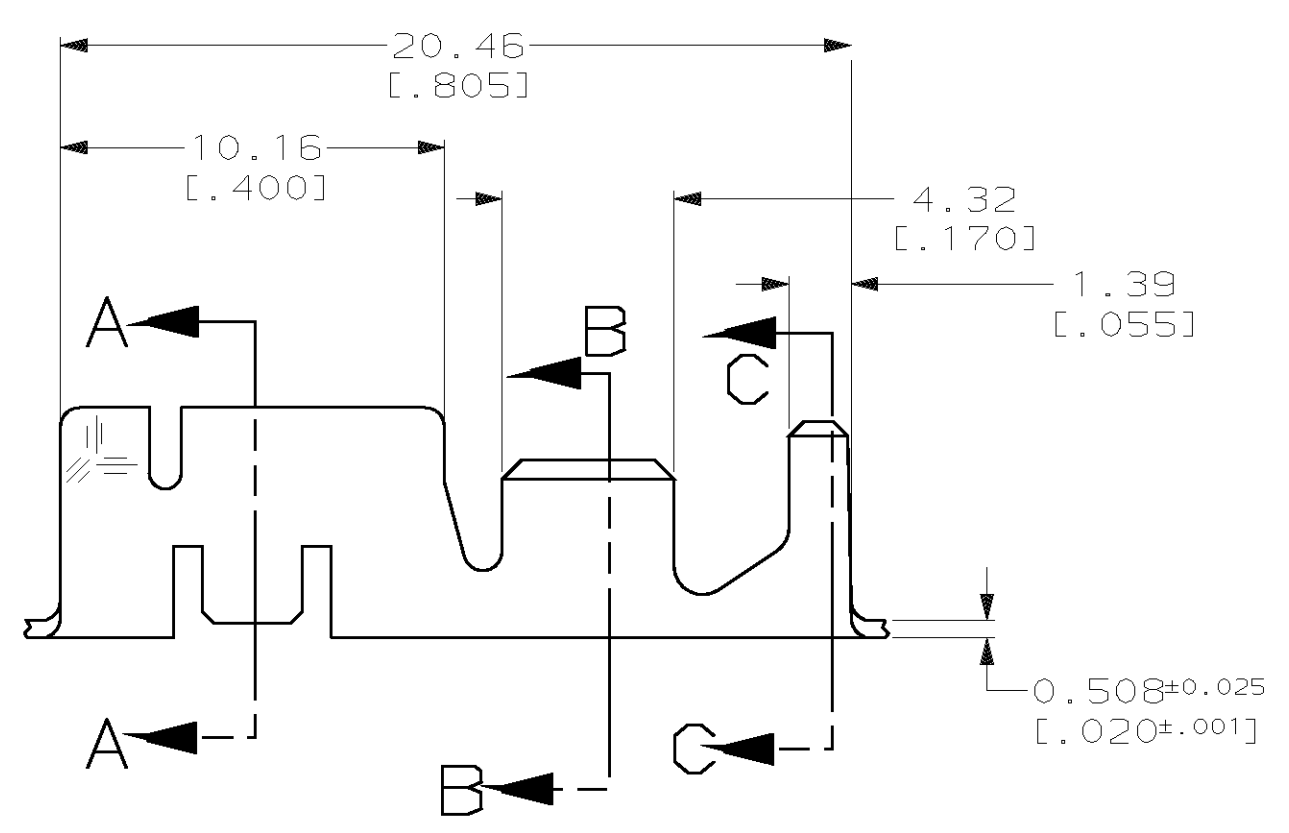
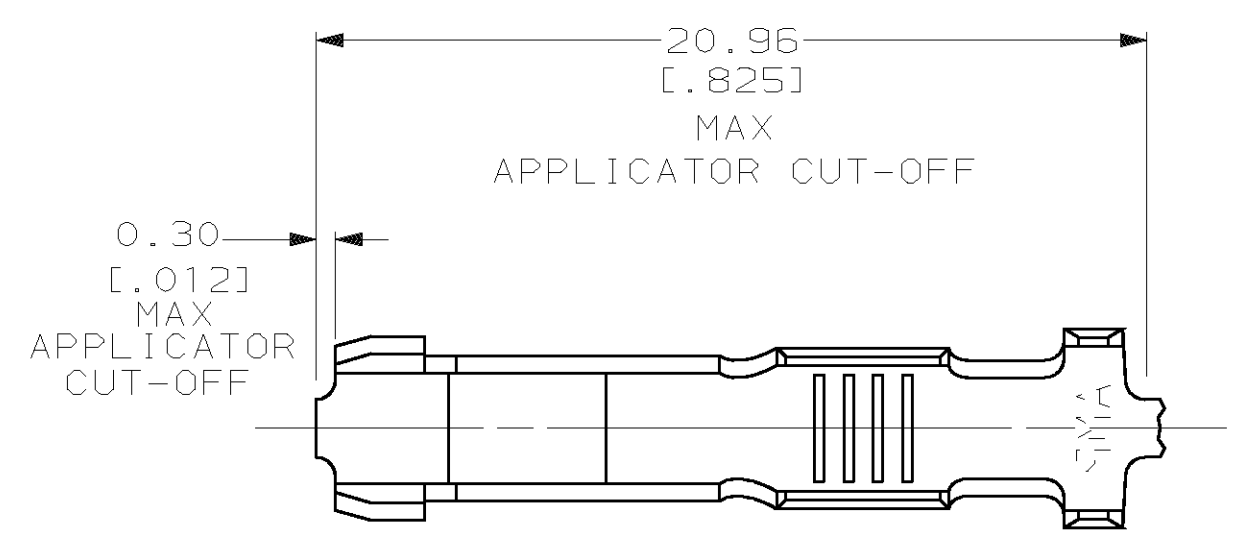


THIS DRAWING IS UNPUBLISHED. RELEASED FOR PUBLICATION
 © COPYRIGHT 19 BY AMP INCORPORATED. ALL INTERNATIONAL RIGHTS RESERVED.

LOC		DIST		ZONE		LTR		REVISIONS		DATE	APPD
AF	50	P	F			AA		REV PER 0G3A-0245-99	03JAN2000	MF/PD	



1 CONTINUOUS STRIP ON REELS WITH TERMINALS LOCATED ON 22.61 [.890] CENTERS

F OR O	4.57 [.180]	6.22 [.245]	F	3.56 [.140]	2.97 [.117]	5.0mm ² [10]
					2.54 [.100]	3.0mm ² [12]
TYPE	WIDTH	STRIP LENGTH ±0.38 [±.015]	TYPE	WIDTH	±0.051 [±.002] HEIGHT	WIRE
INSUL BARREL CRIMP			WIRE BARREL CRIMP			



	4.32 [.170] MAX	2.0-5.0mm ² [#14-#10] AWG	62243-3
	INSULATION BARREL DIA	WIRE BARREL RANGE	PART NO
DO NOT SCALE PRINT. UNLESS SPECIFIED DIMENSIONS IN mm [INCHES] TOLERANCES ON :	2/20/90 DK SCHRUM	AMP INCORPORATED Harrisburg, Pa. 17105	
2 PLC DEC ± -	CHK 2/22/90 MS FEHER		
3 PLC DEC ± 0.38 [.015]	APPD 3/5/90 DF DECKER	NAME RECEPTACLE, CLUSTER PIN, 3.18 [.125] DIA	
ANGLES ± -	APPD 3/5/90 TL SHUTTER		
MATERIAL	PRODUCT SPEC	SIZE	CAGE CODE
#3 HARD PHOSPHOR BRONZE		C	00779
FINISH	APPLICATION SPEC	SCALE	DRAWING NO
TIN PER MIL-T-10727 0.002032 [.000080] THK		5:1	62243
	WEIGHT		SHEET
			1 OF 1